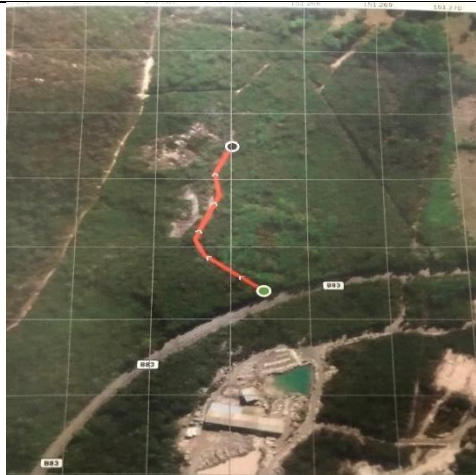


# Mooney Mooney Aboriginal Site and Old Quarry

## Trip and Track Notes



Map of the route to site



Parking on Pacific Highway verge

## Trip Notes

### Introduction

The Mooney Mooney Aboriginal Site is a set of rock carvings located on the sandstone plateau near Somersby, NSW.

The Old Sandstone Quarry is an abandoned site located adjacent to the carvings in Brisbane Waters National Park.

With very easy access and very close proximity to each other, they can be combined to make a very interesting and enjoyable day trip.

### Access

The best Starting Point to access the sites is from a small foot track (CP 1 -33.4266876, 151.2673985) the Old Pacific Highway just west of the entrance to The Australian Reptile Park.

### Parking

You can park on the verge on either side of The Old Pacific Hwy (Ref -33.4267539, 151.2672577) in the vicinity of the Start Point.



The Start of the Foot Track (CP1)



Foot Track leads to 4WD Tk



Junction of 4WD Tk & Foot Tk (CP2)



Mooney Mooney Aboriginal Site Sign (CP3)

If parking on the east side of the highway, be VERY CAREFUL crossing the road as it can be very busy and vehicles, especially motorbikes, tend to travel at high speeds in the area.

#### Facilities

There are no Facilities in the course of the trip or at the destination area. Please ensure you DO NOT leave RUBBISH behind. Take it with you.

“Leave only footprints and take only photos”

#### Cultural Site

The Aboriginal Site is a cultural location. Please pay the area due respect. DO NOT damage the site or leave rubbish. Very significant fines can be imposed.

#### Water

There is no drinking water available in the area, so you need to ensure you carry sufficient water. For suggestions on water usage and other handy items, please refer to the “Equipment Section” of the website.

#### Modes of Travel

Walking – the trip is suitable for walking.

Mountain biking – all three sections of the trip are suitable for mountain biking.

Please ensure you DO NOT bike across the area of the carvings.

If you intend to ride around in the area of the old Quarry you will need to take EXTREME care as there are many hazards in the area.

Your safety is YOUR RESPONSIBILITY.



Aboriginal Carving Site (CP4)



North end of Carving towards Quarry



Warning Sign



Tk between Carvings and Quarry

Suggestion on suitable “Apps” and their use can be found in the “Training and Skills” Section of the website.

At the very least, a basic understanding of navigation is highly recommended for anyone venturing into the bush. Further information regarding “Bush Navigation” can be found in the “Training and Skills Section” of the website.

Specialised Equipment.

There is no specialised equipment needed for this trip. However, a suggested list of “standard” equipment and other information can be found in the “Equipment Section” of the website.

General Safety

The “bush” is a foreign and uncontrolled environment in which you need to use common sense and due care to ensure your own safety, the safety of those with you and the safety of those with who you may come into contact.

By being alert but not alarmed, you will make you trip safe and enjoyable for all concerned.

There are a number of hints and ideas contained in the “Safety Section” of the website that can help ensure a safer trip into the bush.

Remember the emphasis for safety is ON YOU ... if you can't accept it, don't go!!!

Track Notes

Approximate Return Distance – 600 metres

Approximate Return Travel Time – 1.0 hours (very easy pace)

Degrees of Difficulty:

- 1. Overall – Easy (2)
- 2. Sections:
  - Section 1- Easy (2)
  - Section 2- Easy (1)
  - Section 2 – Easy (1)

Starting Point : Small foot track off The Pacific Highway at Somersby (CP1 -33.4266876, 151.2673985)

End Point : Back at the Starting Point



Entry Track to Quarry (CP 5)



Old Quarry Site (CP6)



Danger – Steel Spikes at Quarry



Old Quarry Site

Dangers.

The Old Quarry Site can be a dangerous area. Please take extreme care in the area.

Course:

**Section 1 – Foot Track – Approximately 30m**

- A. From the Start Point, follow the foot track, up the small rise to the junction with the 4WD Track (CP 2 -33.426313, 151.266981).

**Section 2 – 4WD Track – Approximately 100m**

- B. At the junction turn left (West) onto the 4WD tk and follow this track. You will come to the sign after about 100m (CP 3 -33.42548, 151.266716). Directly behind this sign you will see the sandstone plateau area on your left (West).  
This is the Mooney Mooney Aboriginal Site. (CP 4 -33.4254976, 151.2665097).

Explore and enjoy but PLEASE respect.

**Section 3 – 4WD Track – Approximately 30m**

- C. From the carvings you can head north off the end of the plateau and through the bush for about 20m. This will bring you out at the end of the Old Quarry. However, this course can be a bit challenging.
- D. Alternatively, you can return to the 4WD Track where you entered the Aboriginal Site.
- E. Follow the 4WD tk straight ahead (north). After about 130m, the Foot Tk to the Old Quarry appears on the left (West) (CP 5 -33.424412, 151.267002).

Explore and enjoy ... but please take extreme care in this area.

Return

The return journey follows the same course as travelled but in reverse.

Further Information.

If you would like to further clarify any of the Trip or Track information, please email your questions to [aussieoutdoorkids@mail.com](mailto:aussieoutdoorkids@mail.com) .

## Summary of Check Points

<b>CP</b>	<b>Longitude</b>	<b>Latitude</b>	<b>Description</b>	<b>Notes</b>
1	-33.4266876	151.2673985	Start of Foot Track	Start Point
2	-33.426313	151.266891	Junction of Foot Tk and 4WD	Turning point
3	-33.425481	151.266716	Mooney Aboriginal Site Sign	
4	-33.4254976	151.2665097	Mooney Aboriginal Site	
5	-33.424412	151.267002	Foot Track entry to Old Quarry Site	Destination 1
6	-33.4244770	151.2663645	The Old Quarry	